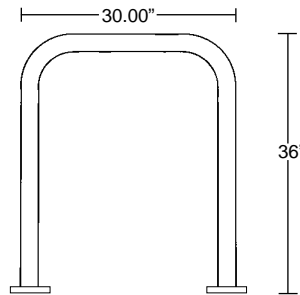


## The HP Rack

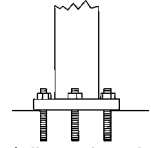
Each unit is constructed of 2.375" (6.0 cm) O.D. 2" (5.0 cm) I.D. x 0.154" (.39 cm) wall ASTM A53 schedule 40 steel pipe.

- The HP is 36" (91.4 cm) or optional 42" (91.4 cm) high x 30" (76.2 cm) wide.
- Mounting Options (see detail)
  - Flange Mount
  - Free-Standing
  - In-Ground
- Choice of four finishes:
  - Hot Dipped Galvanized
  - Powder Coating (weather resistant Polyester TGIC, 6-8 mils thick) in an unlimited range of colors.
  - ASTM A314 schedule 40 TP304 Stainless Steel, #4 Satin Finish.
  - Thermoplastic Coating (10-12 mils thick) in red, black, green, blue, gray, white, yellow and brown.

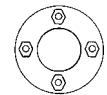


HP 40 lbs.

### MOUNTING OPTIONS FLANGE MOUNT

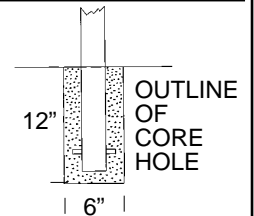


4"x1/2" anchor bolts  
SIDE VIEW



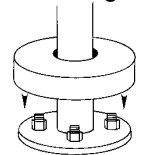
TOP VIEW

### IN-GROUND MOUNT



### FLANGE COVERS

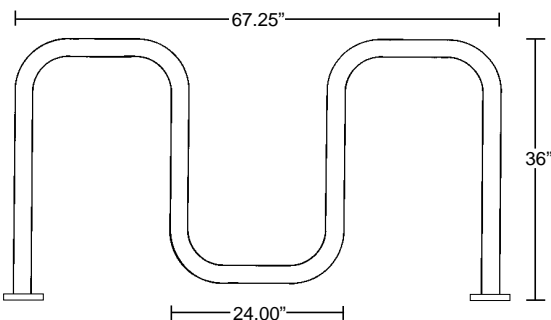
"The Finishing Touch"



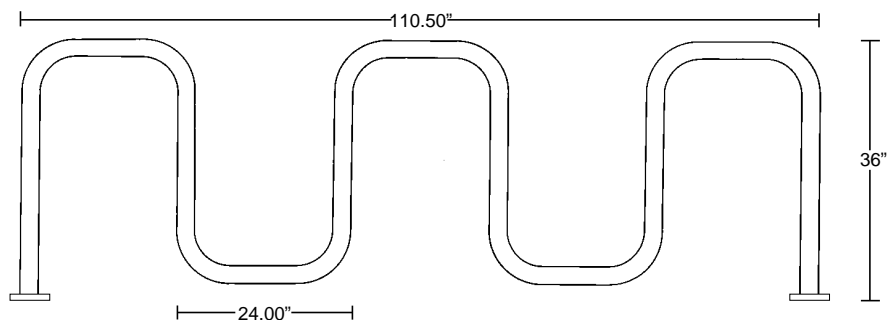
## The SBR Racks

- These racks easily accommodate 2 bikes per "loop" because each loop is 24" (60.9 cm) wide.
- The SBR8 is 67.25" (170.8 cm) long.
- The SBR12 is 110.5" (280.7 cm) long.

Each unit is made of 2.375" (6.0 cm) O.D. 2" (5.0 cm) I.D. x 0.154" (.39 cm) wall ASTM A53 schedule 40 steel pipe and is 36" (91.4 cm) or an optional 42" (106.7 cm) high. Mounting options and Finish choices same as The HP Rack (see above.)



SBR8 80 lbs.



SBR12 110 lbs.