

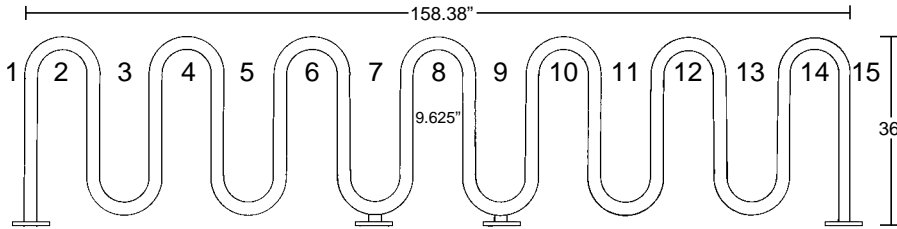
The BR Series Bike Rack

BR15, BR17, BR19 and BR21
Model numbers indicate maximum bike capacity.

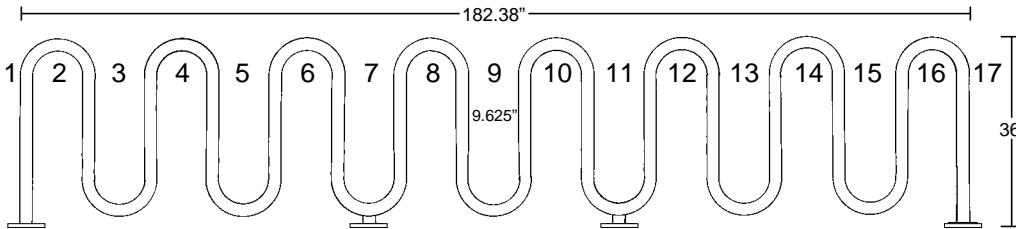
Each unit is constructed of 2.375" (6.0 cm) O.D. 2" (5.0 cm) I.D. x 0.218" (.55 cm) wall ASTM schedule 40 steel pipe.

All BR Series racks are 36" (91.4 cm) or an optional 42" (106.7 cm) high.

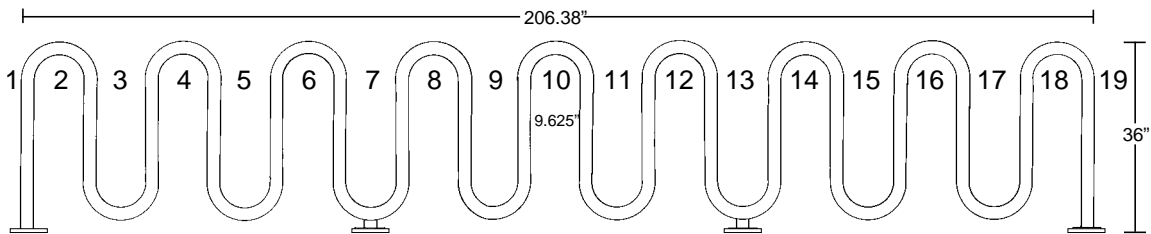
- Mounting Options (see detail)
 - Flange Mount
 - Free-Standing
 - In-Ground
- Choice of three finishes:
 - Hot Dipped Galvanized
 - Powder Coating (weather resistant Polyester TGIC, 6-8 mils thick) in an unlimited range of colors.
 - Thermoplastic Coating (10-12 mils thick) in red, black, green, blue, gray, white, yellow and brown.



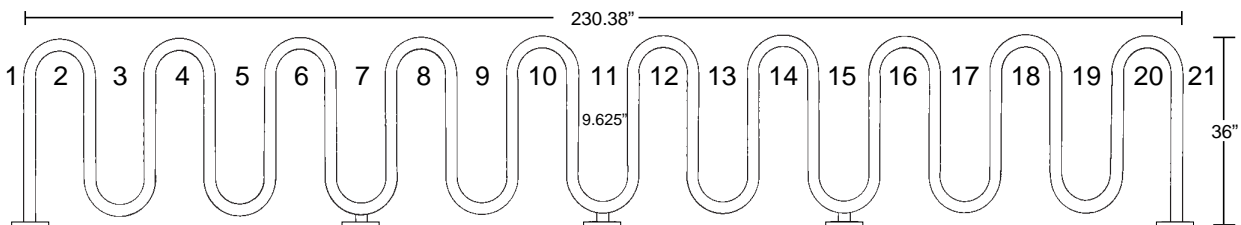
BR15 180 lbs.



BR17 205 lbs.

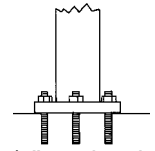


BR19 235 lbs.

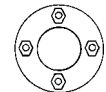


BR21 270 lbs.

**MOUNTING
OPTIONS
FLANGE MOUNT**

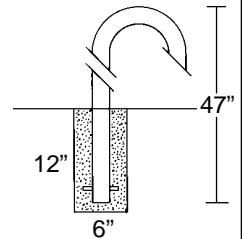


4"x1/2" anchor bolts
SIDE VIEW



TOP VIEW

IN-GROUND MOUNT



FLANGE COVERS
"The Finishing Touch"

